



FOR OFFICAL USE ONLY
HEADQUARTERS
OREGON WING CIVIL AIR PATROL
 United States Air Force Auxiliary
 28735 Grumman Drive
 Eugene, OR 97402-9542
 (541) 688-9408 (541) 689-9509 FAX



Date: 9 June 2002
 Subject: **INTERIM DIRECTON - HOMELAND SECURITY INITIAL PROTECTIVE MEASURES**
 To: Commanders all units Oregon Wing
 From: CC

1. The President of the United States in Homeland Security Presidential Directive-3 (<http://www.whitehouse.gov/news/releases/2002/03/20020312-5.html>) established a Homeland Security Advisory System to provide a comprehensive and effective means to disseminate information regarding the risk of terrorist acts to Federal, State, and local authorities and to the American people. This system provides warnings in the form of a set of graduated "Threat Conditions" that increase as the risk of the threat increases. At each Threat Condition, Federal departments and agencies will implement a corresponding set of "Protective Measures" to further reduce vulnerability or increase response capability during a period of heightened alert.
2. In the absence of direction from higher headquarters, ORWG has developed interim guidance to all units and personnel for protective measures to be undertaken by CAP personnel in response to notification of changes in the Homeland Security threat condition (THREATCON).
3. Official notification of a change in THREATCON status may be received in a number of ways to include:
 - a. Official notification through CAP channels
 - b. Official notification from the State of Oregon via OEM or the Oregon State Military Department
 - c. Casual notification from the media or other sources and then reported by a CAP member
4. Notification via official channels will be reported without delay to the Oregon Wing Alerting Officer. CAP members learning of a change of THREATCON status are to report this information to the Oregon Wing Alerting Officer. Unofficial notifications will be reported to the Commander, Oregon Wing or designee who will authentic the status and/or make a determination if ORWG will respond IAW this directive. If a casual notification is authenticated, it will be treated like an official notification.
5. The Commander, Oregon Wing or designee will be notified by the Oregon Wing Alerting Officer using the most expeditious method. ORWG will be alerted to official/authenticated changes in THREATCON by the Oregon Wing Alerting Officer using the WingAlert paging system in the WMU, email using CAPTALK and via CAP radio as a Priority message to Commander's all units Oregon Wing.
6. Once notified of an upgrade in THREATCON, Wing Staff members, unit commanders and members will initiate the actions described in this directive. When notified of a downgrade in THREATCON, all personnel may revise/terminate their activities, as appropriate to the new downgraded THREATCON level.
7. Unit commanders are directed to give this information the widest possible dissemination within their units.
8. This directive shall remain in effect until rescinded.

Prepared By

Approved

Approved

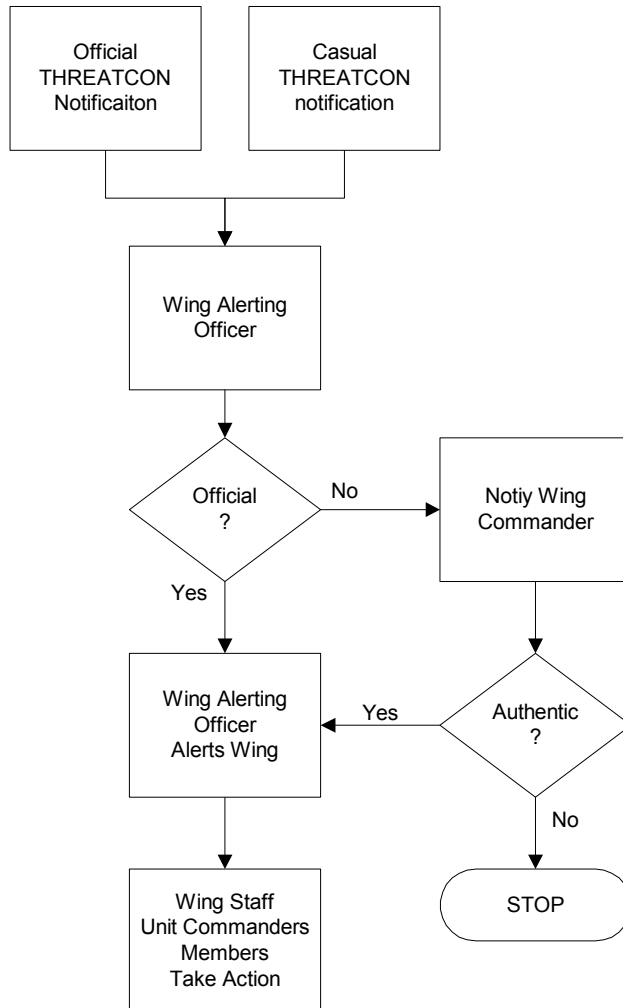
David A. Rudawitz, Major CAP
 Emergency Services Officer

Robert Asher, Captain CAP
 Director of Operations

Steven A Senderling, Colonel, CAP
 Commander, Oregon Wing

FOR OFFICAL USE ONLY
INTERIM DIRECTON - HOMELAND SECURITY INITIAL PROTECTIVE MEASURES
Attachment 2 – Notification Process Flow Chart

Page 2 of 9



FOR OFFICAL USE ONLY
INTERIM DIRECTON - HOMELAND SECURITY INITIAL PROTECTIVE MEASURES
Attachment 2 - ORWG Response Matrix

Assignment	Guarded Condition Blue	Elevated Condition Yellow	High Condition Orange	Severe Condition Red
Overview				
	Elevated state of alert with an initial confirmation of ES asset and personnel status. No response or repositioning of assets at this THREATCON level.	Elevated state of alert with an initial confirmation of ES asset and personnel status. Assets may be repositioned if necessary to maintain readiness..	ORWG will go on an ALERT 60 status with preparation to launch aircraft for communications or surveillance missions from the PDX area, Eugene and Medford. Preparations will be made to open ORWG HQ as the ORWG Command Post (ORWGCP) to manage an ORWG response in the event of activation by competent authority. Communications nets will be activated with check ins on a daily basis. Daily operations status reports will be prepared to monitor and report ORWG status.	ORWG will escalate response to an ALERT 15 active status prepared to launch aircraft within 15 minutes of notification. ORWG HQ will be manned as ORWGCP and senior staff will respond as available. ORWG response posture will be assessed daily by the Commander and may be downgraded to High Condition Orange response .
Wing Staff				
Commander	· Monitor status of Wing alert	· Monitor status of Wing alert	· Condition Yellow and Direct response of ORWG · Monitor CAP radio · Determine if additional precautionary actions are required. · Assess ORWG continued status in High Condition Orange on a daily basis	· Condition Orange and Proceed to ORWGCP and take direct command of ORWG's response · Assess ORWG continued status in Severe Condition Red on a daily basis

FOR OFFICAL USE ONLY
INTERIM DIRECTON - HOMELAND SECURITY INITIAL PROTECTIVE MEASURES
Attachment 2 - ORWG Response Matrix

Page 4 of 9

Assignment	Guarded Condition Blue	Elevated Condition Yellow	High Condition Orange	Severe Condition Red
Director Operations (DO)	<ul style="list-style-type: none"> · Review plans · Confirm status of assets 	<ul style="list-style-type: none"> · Review plans · Confirm status of assets · Review threat level and direct additional readiness action as appropriate 	<ul style="list-style-type: none"> · Condition Yellow and Monitor CAP radio · Establish an ALERT 60 standby overhead team and aircrews for wing aircraft in PDX area, Eugene and Medford · Review status and precautionary measures on a daily basis 	<ul style="list-style-type: none"> · Condition Orange and Activate the ALERT 60 Overhead team to responds and activates ORWGCP. · Proceed to ORWGCP · Assist the IC in maintaining staffing of the ALERT 15 crews · Assess ORWG continued status in Severe Condition Red on a daily basis and report to the Commander.
Emergency Services Officer (DOS)	<ul style="list-style-type: none"> · Review plans · Confirm status of assets 	<ul style="list-style-type: none"> · Review plans · Confirm status of assets · Execute additional contingency plans as directed by the DO 	<ul style="list-style-type: none"> · Condition Yellow and Monitor CAP radio · Monitor national and wing situation and advise the DO as appropriate · Prepare specific contingency plans as requested · Maintain a daily Wing Response Status report that identifies the status of all ORWG ES assets and personnel 	<ul style="list-style-type: none"> · Condition Orange and Proceed to ORWGCP
Alerting Officer (DOA)	<ul style="list-style-type: none"> · Notify ES personnel of condition status 	<ul style="list-style-type: none"> · Notify ES personnel of condition status · Update on call IC list for the condition yellow period. 	<ul style="list-style-type: none"> · Condition Yellow and Monitor CAP radio · Implement establishment of Alert 60 personnel · Initiate notification of ORWG moving to High Condition Orange · Standby to receive possible mission tasking alert · Update daily as required 	<ul style="list-style-type: none"> · Condition Orange and Initiate notification of ORWG moving to Extreme Condition Red · Standby to receive possible mission tasking alert

FOR OFFICAL USE ONLY
INTERIM DIRECTON - HOMELAND SECURITY INITIAL PROTECTIVE MEASURES
Attachment 2 - ORWG Response Matrix

Page 5 of 9

Assignment	Guarded Condition Blue	Elevated Condition Yellow	High Condition Orange	Severe Condition Red
Director Logistics (LG)	<ul style="list-style-type: none"> · Update status of Wing assets 	<ul style="list-style-type: none"> · Update status of Wing assets in the WMU · Contact unit LGs as necessary to confirm status 	<ul style="list-style-type: none"> · Condition Yellow and Monitor CAP radio · Advise DO and CC of asset status daily · Prepare contingency plans to bring all assets to operational status · Make preparations to open ORWGCP to manage a Wing response. 	<ul style="list-style-type: none"> · Condition Orange and Proceed to ORWGCP to direct the conversation to an ICP. · Coordinate response logistics support with the Logistics Chief including food and lodging for ICP personnel
Director Communications (DC)	<ul style="list-style-type: none"> · Confirm status of wing communications networks · Originate priority radio and email traffic alerting ORWG of Condition Blue. 	<ul style="list-style-type: none"> · Confirm status of wing communications networks · Originate priority radio and email traffic alerting ORWG of Condition Yellow. 	<ul style="list-style-type: none"> · Condition Yellow and Monitor CAP VHF and HF radio · Establish daily VHF and HF nets to maintain communication and obtain daily unit status reports from all units in ORWG. · Establish an HF radio watch at ORWGCP during business hours · Establish a HF radio watch at to cover the after hours period. 	<ul style="list-style-type: none"> · Condition Orange and Proceed to ORWGCP · Support the ICP as required.
Wing Net Control Stations	<ul style="list-style-type: none"> · Determine status of Wing Communications stations · Monitor HF and VHF nets 	<ul style="list-style-type: none"> · Determine status of Wing Communications stations · Monitor HF and VHF nets 	<ul style="list-style-type: none"> · Condition Yellow and Monitor CAP VHF and HF radio · Conduct daily VHF and HF nets 	<ul style="list-style-type: none"> · Condition Orange and Support any mission traffic requirements.
Other Wing Staff	<ul style="list-style-type: none"> · Check status of sections · Assist as requested 	<ul style="list-style-type: none"> · Check status of sections · Assist as requested 	<ul style="list-style-type: none"> · Monitor CAP radio · Check status of sections · Assist as requested 	<ul style="list-style-type: none"> · Condition Orange

FOR OFFICAL USE ONLY
INTERIM DIRECTON - HOMELAND SECURITY INITIAL PROTECTIVE MEASURES
Attachment 2 - ORWG Response Matrix

Page 6 of 9

Unit Staff				
Commander	<ul style="list-style-type: none"> Monitor status of unit 	<ul style="list-style-type: none"> Monitor status of unit 	<ul style="list-style-type: none"> Condition Yellow and Monitor CAP radio Supervise unit's response to alert. 	<ul style="list-style-type: none"> Condition Orange and Assist unit personnel in responding to the alert.
Emergency Services Officer	<ul style="list-style-type: none"> Review plans Confirm status of unit assets 	<ul style="list-style-type: none"> Review plans Confirm status of unit assets Contact unit ES personnel and confirm status 	<ul style="list-style-type: none"> Condition Yellow and Monitor CAP radio Contact all ES personnel in unit and determine their response capability. Maintain a status list of unit ES personnel and their availability to respond. Prepare all unit ES assets for possible deployment 	<ul style="list-style-type: none"> Condition Orange and Facilitate unit personnel in responding to the alert.
Communications Officer	<ul style="list-style-type: none"> Monitor HF and VHF nets Determine status of unit communications assets Receive radio traffic and notify commander and unit members. 	<ul style="list-style-type: none"> Monitor HF and VHF nets Determine status of unit communications assets Receive radio traffic and notify commander and unit members. 	<ul style="list-style-type: none"> Condition Yellow and Monitor CAP radio Check into daily nets and provide unit status information as requested 	<ul style="list-style-type: none"> Condition Orange and Facilitate unit personnel in responding to the alert. Report status of Unit personnel to ORWGCP
Members				
ES Personnel			<ul style="list-style-type: none"> Monitor CAP radio Check into daily nets Prepare to perform ES missions in the event CAP is activated Prepare equipment for response as required 	<ul style="list-style-type: none"> Condition Orange and Respond if assigned to an ALERT crew. Prepare to respond and standby if not assigned to an ALERT crew.
Senior Members Non- ES			<ul style="list-style-type: none"> Monitor CAP radio Check into daily nets Prepare equipment for response as required Assist unit ES personnel 	<ul style="list-style-type: none"> Condition Orange and Assist responding personnel.
Cadet Members Non- ES			<ul style="list-style-type: none"> Monitor CAP radio Check into daily nets Assist unit ES personnel 	<ul style="list-style-type: none"> Condition Orange and Assist responding personnel.

FOR OFFICAL USE ONLY
INTERIM DIRECTON - HOMELAND SECURITY INITIAL PROTECTIVE MEASURES
Attachment 2 - ORWG Response Matrix

Page 7 of 9

FOR OFFICAL USE ONLY

Attachment 3 - Definitions of Threat Conditions and Associated Protective Measures

Page 8 of 9

The world has changed since September 11, 2001. We remain a Nation at risk to terrorist attacks and will remain at risk for the foreseeable future. At all Threat Conditions, we must remain vigilant, prepared, and ready to deter terrorist attacks. The following Threat Conditions each represent an increasing risk of terrorist attacks. Beneath each Threat Condition are some suggested Protective Measures, recognizing that the heads of Federal departments and agencies are responsible for developing and implementing appropriate agency-specific Protective Measures:

1. **Low Condition (Green).** This condition is declared when there is a low risk of terrorist attacks. Federal departments and agencies should consider the following general measures in addition to the agency-specific Protective Measures they develop and implement:
 1. Refining and exercising as appropriate preplanned Protective Measures;
 2. Ensuring personnel receive proper training on the Homeland Security Advisory System and specific preplanned department or agency Protective Measures; and
 3. Institutionalizing a process to assure that all facilities and regulated sectors are regularly assessed for vulnerabilities to terrorist attacks, and all reasonable measures are taken to mitigate these vulnerabilities.
2. **Guarded Condition (Blue).** This condition is declared when there is a general risk of terrorist attacks. In addition to the Protective Measures taken in the previous Threat Condition, Federal departments and agencies should consider the following general measures in addition to the agency-specific Protective Measures that they will develop and implement:
 1. Checking communications with designated emergency response or command locations;
 2. Reviewing and updating emergency response procedures; and
 3. Providing the public with any information that would strengthen its ability to act appropriately.
3. **Elevated Condition (Yellow).** An Elevated Condition is declared when there is a significant risk of terrorist attacks. In addition to the Protective Measures taken in the previous Threat Conditions, Federal departments and agencies should consider the following general measures in addition to the Protective Measures that they will develop and implement:
 1. Increasing surveillance of critical locations;
 2. Coordinating emergency plans as appropriate with nearby jurisdictions;
 3. Assessing whether the precise characteristics of the threat require the further refinement of preplanned Protective Measures; and
 4. Implementing, as appropriate, contingency and emergency response plans.

**Attachment 3 - Definitions of Threat Conditions and
Associated Protective Measures**

Page 9 of 9

4. **High Condition (Orange).** A High Condition is declared when there is a high risk of terrorist attacks. In addition to the Protective Measures taken in the previous Threat Conditions, Federal departments and agencies should consider the following general measures in addition to the agency-specific Protective Measures that they will develop and implement:
 1. Coordinating necessary security efforts with Federal, State, and local law enforcement agencies or any National Guard or other appropriate armed forces organizations;
 2. Taking additional precautions at public events and possibly considering alternative venues or even cancellation;
 3. Preparing to execute contingency procedures, such as moving to an alternate site or dispersing their workforce; and
 4. Restricting threatened facility access to essential personnel only.

5. **Severe Condition (Red).** A Severe Condition reflects a severe risk of terrorist attacks. Under most circumstances, the Protective Measures for a Severe Condition are not intended to be sustained for substantial periods of time. In addition to the Protective Measures in the previous Threat Conditions, Federal departments and agencies also should consider the following general measures in addition to the agency-specific Protective Measures that they will develop and implement:
 1. Increasing or redirecting personnel to address critical emergency needs;
 2. Assigning emergency response personnel and pre-positioning and mobilizing specially trained teams or resources;
 3. Monitoring, redirecting, or constraining transportation systems; and
 4. Closing public and government facilities.